

AVATARS OF ATCHE:

ANCESTRAL TOTEMS FROM TOGO AND BENIN



CAVIN-MORRIS GALLERY NY, NY
In Affiliation with Galerie Jean-Jacques Mandel

AVATARS OF ATCHE

ANCESTRAL TOTEMS OF
TOGO AND BENIN

In Affiliation with Galerie
Jean-Jacques Mandel

Cavin-Morris Gallery
New York, NY

AVATARS OF ATCHE

Ancestral Totems of Togo and Benin

Cavin-Morris Gallery is honored to present an exhibition of magic and spirit expressed in intense and powerful works of art from Western Africa. This work is all about process and intention. It is an animistic magic that relies on Nature for its material and spiritual sources - for healing, for love, for midwifery, for remembrance, for power, for cultural resistance, and ultimately for finding a balance in human nature. We have two kinds of objects in this exhibition with the focus on the ancestral poles that mark the safe boundaries of a village or serve to call down protective energies when placed outside a home. The Vodun sculptures are more personal and have to do with the immediate control of Nature and one's personal well-being. Always covert, Vodun is more in the open now. These pieces do not represent the court art we associate with the royalty of Benin, it is the vernacular art of common people struggling to survive in a contemporary world.

Part of the exhibition includes a large selection of magic and spirit objects from the Jean-Jacques Mandel Collection from France. This work is primarily from Benin and Togo. Often covered with a thick sacrificial patina, charged with metal, and the binding powers of ropes, these pieces from the early to mid-Twentieth Century demonstrate that Vodun is still alive, highly functioning, and changing in the contemporary Pan-African world. It is an art in movement....never finished.

This art has developed in tandem with the vernacular arts of the New World. There has been a constant conversation between religions in the African diaspora from the very outset....from the Americas to Asia.

We wish to thank Jean-Jacques Mandel for his passion and friendship, Dana Rush for her encouragement and deep well of insight, and Suzanne Preston Blier for the in-depth perceptions in her writings.

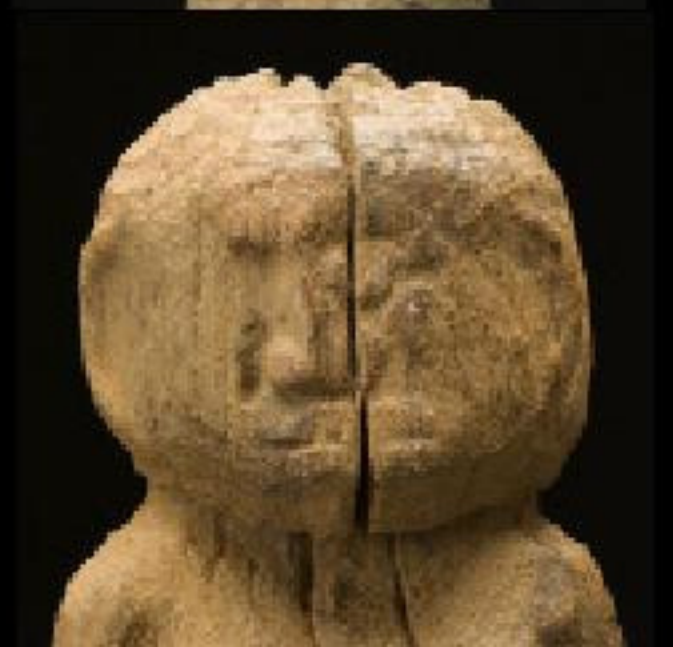
Thanks also to our staff: Marissa Levien, Jurate Veceraite, Sam Richardson, and Caroline Casey for their hard work and enthusiasm in putting together both the show and this catalog.

AVATARS OF ATCHE

By Country

▶ BENIN	8
▶ TOGO	32

BENIN







Bocio - Nago People
Early 20th C.
Wood
28 x 5 x 6 inches / 71.1 x 12.7 x 15.2 cm
Af 297





Bocio - Fon People
 Mid. 20th C.
 Wood, iron, sacrificial materials
 19 x 3 x 2.5 inches / 48.3 x 7.6 x 6.4 cm
 Af 325





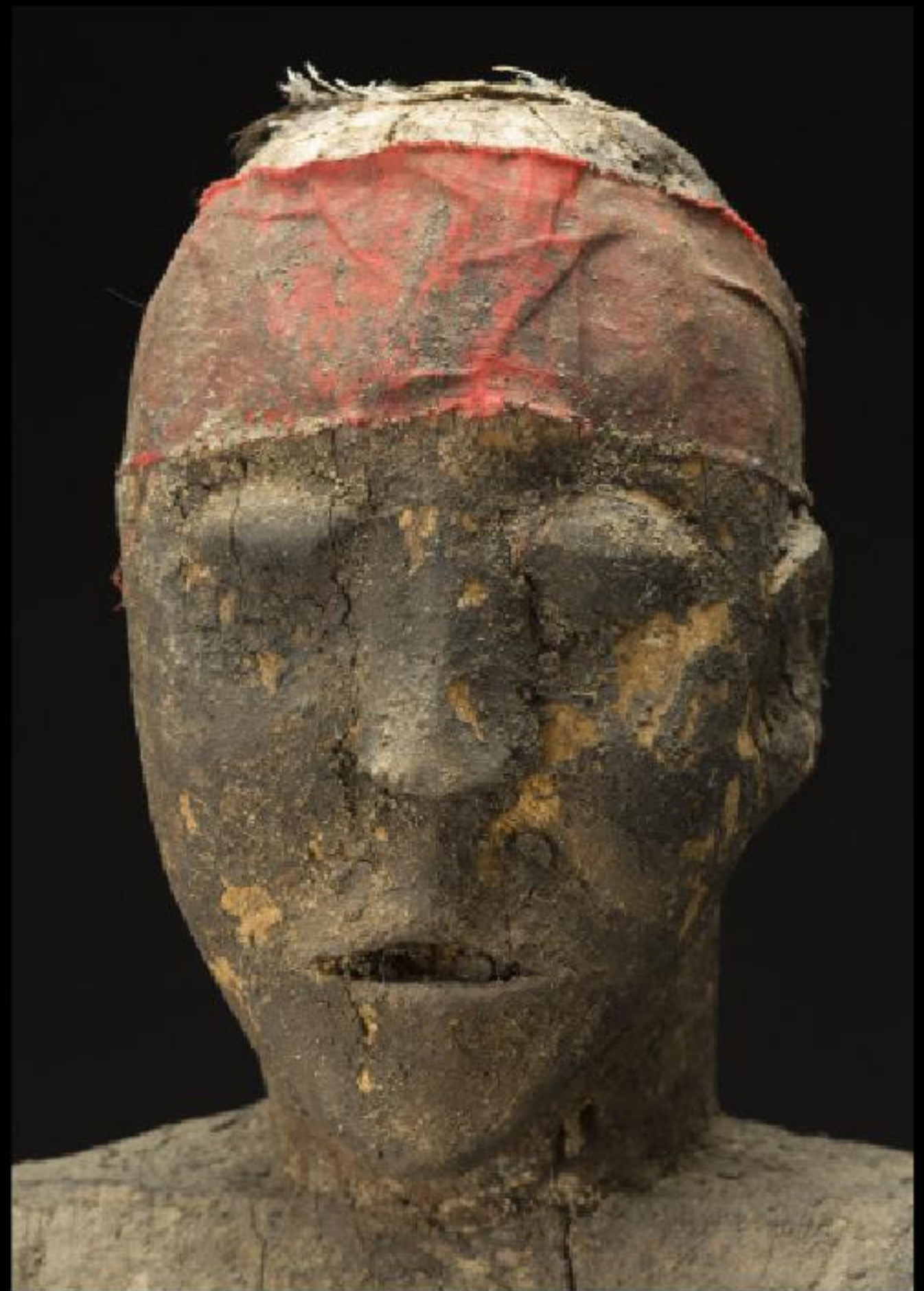
Bocio - Nago People
Mid. 20th C.
Wood
26.5 x 6.5 x 6 inches / 67.3 x 16.5 x 15.2 cm
Af 290





Bocio - Fon People
Mid. 20th C.
Wood, iron base
23 x 4.5 x 2.5 inches / 58.4 x 11.4 x 6.4 cm
Af 298





Vodun Sculpture - Fon People

Mid. 20th C.

Wood, fabric, iron, shells, sacrificial materials

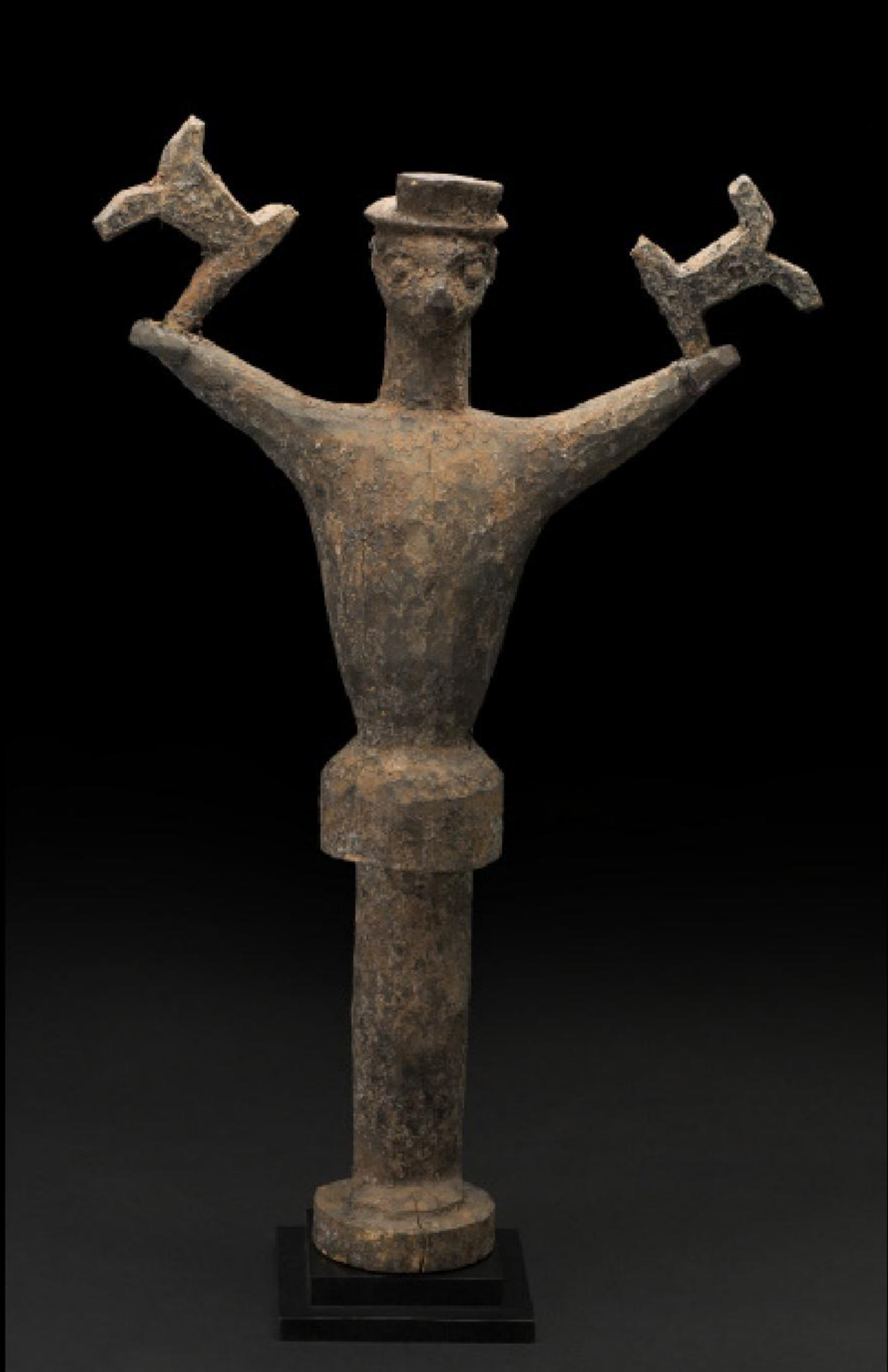
40 x 9.5 x 8 inches / 101.6 x 24.1 x 20.3 cm

Af 289





Bocio - Fon People
Early 20th C.
Wood, white pigment
42 x 5 x 5 inches / 106.7 x 12.7 x 12.7 cm
Af 292





Hevioso Figure - Vodun Sculpture - Fon People

Mid. 20th C.

Wood

29.5 x 15 x 6 inches / 74.9 x 38.1 x 15.2 cm

Af 300





Bocio - Fon People
 Mid. 20th C.
 Wood
 22.5 x 4 x 6 inches / 57.2 x 10.2 x 15.2 cm
 Af 299





Bocio - Fon People
 Mid. 20th C.
 Wood, metal, fabric, string, sacrificial
 materials
 22.5 x 3 x 3 inches / 57.2 x 7.6 x 7.6 cm
 Af 331





Bocio - Fon People
Early 20th C.
Wood, sacrificial materials
48 x 5.5 x 5 inches / 121.9 x 14 x 12.7 cm
Af 333





Bocio - Fon People
Early 20th C.
Wood
37 x 7 x 5.5 inches / 94 x 17.8 x 14 cm
Af 294

TOGO







Bocio - Ewe People
Mid. 20th C.
Wood, shells, natural materials
19 x 5 x 3 inches / 48.3 x 12.7 x 7.6 cm
Af 330





Moba Ancestral Sculpture - Moba People

Early 20th C.

Wood

55 x 7 x 7 inches / 139.7 x 17.8 x 17.8 cm

Af 334





Bocio - Ewe People

Mid. 20th C.

Wood, metal, fabric, shells, natural materials

37.5 x 6 x 6 inches / 95.3 x 15.2 x 15.2 cm

Af 287





Bocio - Ewe People

Early 20th C.

Wood

59.5 x 8 x 8 inches / 151.1 x 20.3 x 20.3
cm





Bocio - Ewe People
Early 20th C.
Wood, sacrificial materials
60.5 x 6 x 6 inches / 153.7 x 15.2 x 15.2 cm
Af 301





Bocio - Adan/Ewe People

1970

Wood

58 x 4.5 x 4.5 inches / 147.3 x 11.4 x 11.4 cm

Af 284





Bocio - Ewe/Adan People

c. 1970-1980

Wood, fabric, feathers, pigment, shells,
grass, and other natural materials

35.5 x 8.5 x 6.5 in / 90.2 x 21.6 x 16.5 cm

Af 293





Bocio - Adan/Ewe People

1980

Wood, fabric, pigment, shells, twine
40 x 4 x 4 inches / 101.6 x 10.2 x 10.2 cm

Af 295





Bocio - Ewe People

Early 20th. C.

Wood

41 x 6 x 6 inches / 104.1 x 15.2 x 15.2 cm

Af 291





Bocio - Adan/Ewe People

1980

Wood, fabric, pigment, shells, twine
40 x 4 x 4 inches / 101.6 x 10.2 x 10.2 cm

Af 295





Bocio - Ewe/Adan People,
Mid. 20th C.
Wood, shells, pigments
55.5 x 3.5 x 3.5 inches / 141 x 8.9 x 8.9 cm
Af 302

Copyright © 2015 CAVIN-MORRIS GALLERY

Cavin-Morris Gallery
210 Eleventh Ave, Ste. 201
New York, NY 10001
t. 212 226 3768
www.cavinmorris.com

Catalogue design: Sam Richardson & Marissa Levien
